

Balmoral

A spacious 3 bed semi-detached home over three floors the Balmoral offers substantial living space and a detached single garage - built and designed by Lindum Homes.



The image right depicts our Balmoral house type; however, please note that there may be some elevation variations so this is for guidance only.

For further information about availability and plot specific details please discuss with our Sales Team.

The entrance hall leads to an open plan fitted kitchen through to lounge with ample space for a dining area.

The lounge has patio doors leading onto the garden. A cloakroom completes the ground floor.

The first floor has two bedrooms, a bathroom, including a shower over bath.

The second floor has a lobby leading from the first floor to a master bedroom, which, includes an en-suite and useful storage space with a built in wardrobe.

Balmoral

1136 sq ft

Lindum Homes gives notice that the property particulars and related information shown in this publication are set as a general outline for guidance only.

Intending purchasers or tenants should not rely on them as statements or representations of fact, but must satisfy themselves by physical inspection of the property in question or otherwise as to their accuracy.

Ground Floor



LOUNGE 4685 x 4395mm (15' 4" x 14' 4")

KITCHEN 4705 x 2675mm (15' 4" x 8' 9")

GARAGE (DETACHED) 5035 x 2560mm (16' 6" x 8' 4")

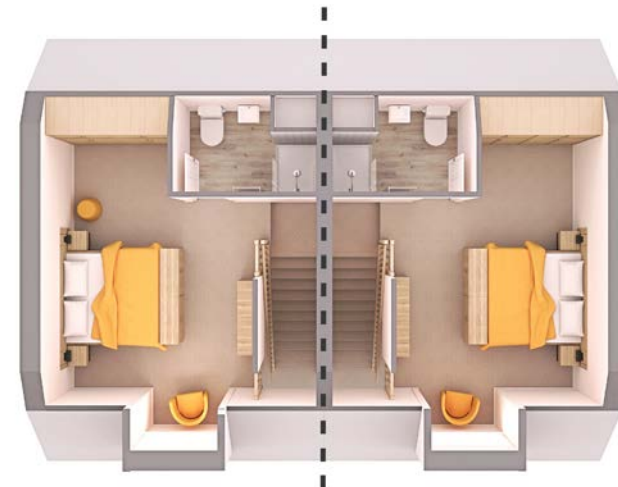
First Floor



BED 2 4685 x 2640mm (15' 4" x 8' 8")

BED 3 2705 x 2455mm (8' 10" x 8' 0")

Second Floor



BED 1 4600 x 3650mm (15' 0" x 11' 10")

All measurements are maximum (Inc Bay windows & Wardrobes) • Sq ft excludes garage space