



Canwick Villa

South Park • Lincoln • LN5 8ES

A collection of 14 exclusive new apartments in the quiet cul-de-sac of South Park, close to the city centre and enjoying open countryside on your doorstep.

The impressive exterior design complements the large Victorian houses originally built here, while the interiors provide exceptional modern living space with picture-postcard views.

Great Homes, Great Locations

Brought to you by



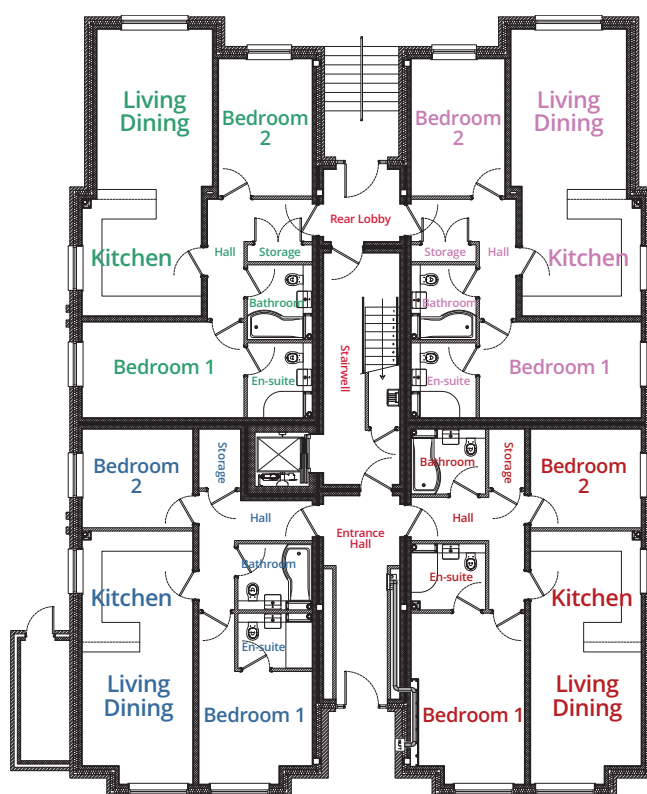
Ground Floor

Apartment 3 Room Sizes

Kitchen/Living Dining	8720 x 3622mm (28'6" x 11'8")
Bedroom 1	4922 x 2910mm (16'1" x 9'5")
Bedroom 2	4175 x 2847mm (13'6" x 9'3")

Apartment 1 Room Sizes

Kitchen/Living Dining	7702 x 3362mm (25'2" x 11')
Bedroom 1	3425 x 3455mm (11'2" x 11'3")
Bedroom 2	3000 x 3362mm (9'8" x 11')



Entrance

Apartment 4 Room Sizes

Kitchen/Living Dining	8720 x 3622mm (28'6" x 11'8")
Bedroom 1	4922 x 2910mm (16'1" x 9'5")
Bedroom 2	4175 x 2847mm (13'6" x 9'3")

Apartment 2 Room Sizes

Kitchen/Living Dining	7702 x 3362mm (25'2" x 11')
Bedroom 1	5202 x 3445mm (17' x 11'3")
Bedroom 2	3000 x 3362mm (9'8" x 11')

First Floor

Apartment 7 Room Sizes

Kitchen/Living Dining	8720 x 3622mm (28'6" x 11'8")
Bedroom 1	4922 x 2910mm (16'1" x 9'5")
Bedroom 2	4175 x 4180mm (13'6" x 13'7")

Apartment 5 Room Sizes

Kitchen/Living Dining	7702 x 3362mm (25'2" x 11')
Bedroom 1	3425 x 4777mm (11'2" x 15'6")
Bedroom 2	3000 x 3362mm (9'8" x 11')



Apartment 8 Room Sizes

Kitchen/Living Dining	8720 x 3622mm (28'6" x 11'8")
Bedroom 1	4922 x 2910mm (16'1" x 9'5")
Bedroom 2	4175 x 4180mm (13'6" x 13'7")

Apartment 6 Room Sizes

Kitchen/Living Dining	7702 x 3362mm (25'2" x 11')
Bedroom 1	5202 x 4777mm (17' x 15'6")
Bedroom 2	3000 x 3362mm (9'8" x 11')

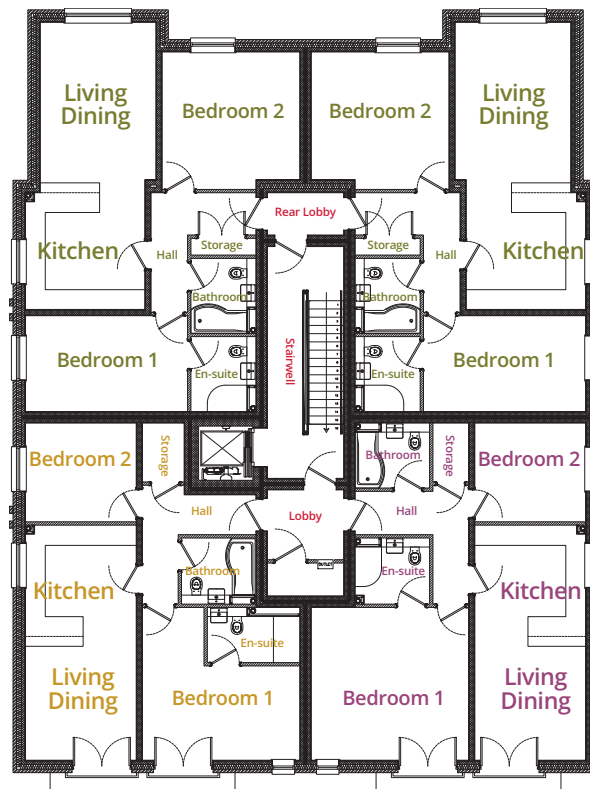
Second Floor

Apartment 11 Room Sizes

Kitchen/Living Dining	8720 x 3622mm (28'6" x 11'8")
Bedroom 1	4922 x 2910mm (16'1" x 9'5")
Bedroom 2	4175 x 4180mm (13'6" x 13'7")

Apartment 9 Room Sizes

Kitchen/Living Dining	7140 x 3362mm (23'4" x 11')
Bedroom 1	2865 x 4777mm (9'3" x 15'6")
Bedroom 2	3000 x 3362mm (9'8" x 11')



Apartment 12 Room Sizes

Kitchen/Living Dining	8720 x 3622mm (28'6" x 11'8")
Bedroom 1	4922 x 2910mm (16'1" x 9'5")
Bedroom 2	4175 x 4180mm (13'6" x 13'7")

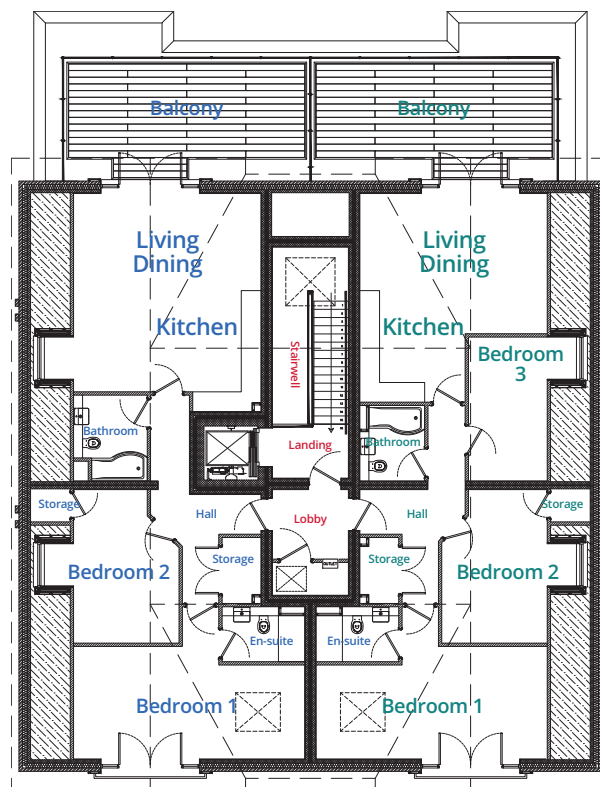
Apartment 10 Room Sizes

Kitchen/Living Dining	7140 x 3362mm (23'4" x 11')
Bedroom 1	4640 x 4777mm (15'2" x 15'6")
Bedroom 2	3000 x 3362mm (9'8" x 11')

Third Floor Penthouses

Apartment 13 Room Sizes

Kitchen/Living Dining	6645 x 5712mm (21'8" x 18'7")
Bedroom 1	7045 x 3430mm (23'1" x 11'2")
Bedroom 2	3217 x 4680mm (10'5" x 15'3")
Balcony	7500 x 3700mm (24'6" x 12'1")



Apartment 14 Room Sizes

Kitchen/Living Dining	6360 x 5712mm (20'8" x 18'7")
Bedroom 1	7045 x 3430mm (23'1" x 11'2")
Bedroom 2	3217 x 4680mm (10'5" x 15'3")
Bedroom 3	4385 x 2402mm (14'3" x 7'8")
Balcony	7500 x 3700mm (24'6" x 12'1")



Location...

South Park is a cul-de-sac situated on the southern edge of Lincoln, barely a mile from the city centre, with spectacular views of open countryside, the South Common.

The original large houses were built in Victorian times for the fantastic views and easy access onto the open hillside. Much of the landscaping carried out is still visible today and includes metal railings and tree planting. The rural walk at the top of the hill, now part of the Viking Way long-distance footpath, offers breathtaking views over the city towards the Cathedral and Castle on the opposite hillside.

The International Bomber Command Memorial Spire makes a striking addition to the south-eastern skyline.

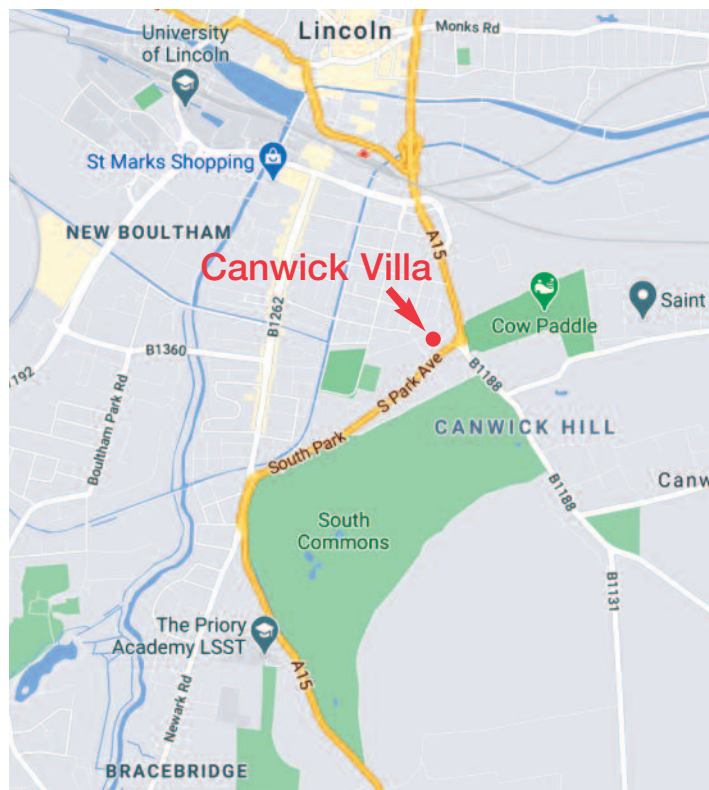
Canwick Villa Apartments...

This collection of 14 exclusive modern apartments offers a choice of living spaces housed over four floors and includes two penthouses with balconies and views of Lincoln Cathedral.

Finished to a high standard with internal oak veneered doors, a choice of Amtico flooring to all rooms, except bedrooms, where a selection of carpet is provided. AEG integrated and built-in appliances and a Grade A Gas boiler, along with a selection of ceramic wall tiles for the bathroom and en-suite.

Each apartment has two bedrooms with one three bedroom penthouse apartment available. The master bedroom includes a fitted wardrobe and en-suite, all part of the luxury living environment being created for you to make your own.

Allocated private parking is provided within the grounds.



For further information on availability, the range of kitchens, décor choices and plot specific details including Energy Performance information, please contact our Sales Team.

For more information contact **Lindum Homes** ☎ 01522 852452
or visit our website www.lindumhomes.co.uk

Postcode Ref: LN5 8ES

Lindum Homes gives notice that the property particulars and related information shown here are set as a general outline for guidance only. Intending purchasers or tenants should not rely on them as statements or representations of fact, but must satisfy themselves by physical inspection of the property in question or otherwise as to their accuracy.